

U25 Points

PART ID	DESCRIPTION	A LENGTH mm / in	B BIT WIDTH mm / in	C BIT THICKNESS mm / in	D WIDTH AT EARS mm / in	WEIGHT kg / lb
U25A	Abrasion	219 / 8.60	55 / 2.15	13 / 0.50	93 / 3.67	5.8 / 12.7
U25AP	Abrasion Penetration	242 / 9.51	52 / 2.04	16 / 0.62	93 / 3.67	4.8 / 10.7
U25C	Chisel	229 / 9.00	31 / 1.20	10 / 0.38	93 / 3.67	3.4 / 7.5
U25CHB	Chisel**	229 / 9.00	31 / 1.20	10 / 0.38	93 / 3.67	3.4 / 7.5
U25F	Flare	210 / 8.25	127 / 4.99	12 / 0.47	93 / 3.67	4.1 / 8.9
U25H	Heavy	227 / 8.95	32 / 1.25	14 / 0.54	93 / 3.67	4.1 / 9.0
U25P	Pick	224 / 8.80	12 / 0.46	6 / 0.25	93 / 3.67	2.9 / 6.3
U25S	Standard	211 / 8.29	82 / 3.22	8 / 0.33	93 / 3.67	3.4 / 7.5
U25SHB	Standard**	211 / 8.29	82 / 3.22	8 / 0.33	93 / 3.67	3.4 / 7.5
U25T	Twin Pick	224 / 8.80	112 / 4.43	8 / 0.31	93 / 3.67	3.3 / 7.2

** Ships with Bolt-in Lock

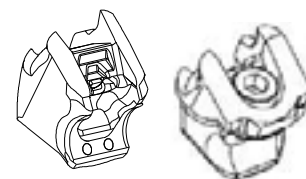
Lock Assembly

PART ID	DESCRIPTION	LENGTH mm/in	WEIGHT PER PART kg/lb
U20-25L-BOX	ULTRALOK LOCK ASSEMBLY-10EA;NONE	20.08 / 0.79	0.03 / 0.06
U25LHB-BOX	ULTRALOK BOLT-IN HS LOCK-10EA;NONE	20.08 / 0.79	0.05 / 0.1

Note: Available only by the box, 10 locks per box.

Standard

LHB

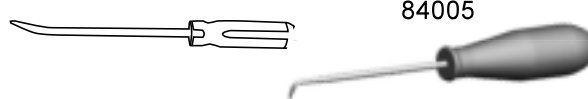


Pry Tools/Removal Tools

PART ID	DESCRIPTION	WEIGHT kg/lb
CPB8G	PRY BAR WITH HANDLE-SMALL;	0.14 / 0.30
84005	FINES PICK TOOL-SMALL;	0.05 / 0.10

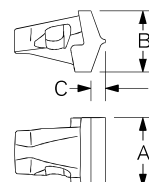
CPB8G

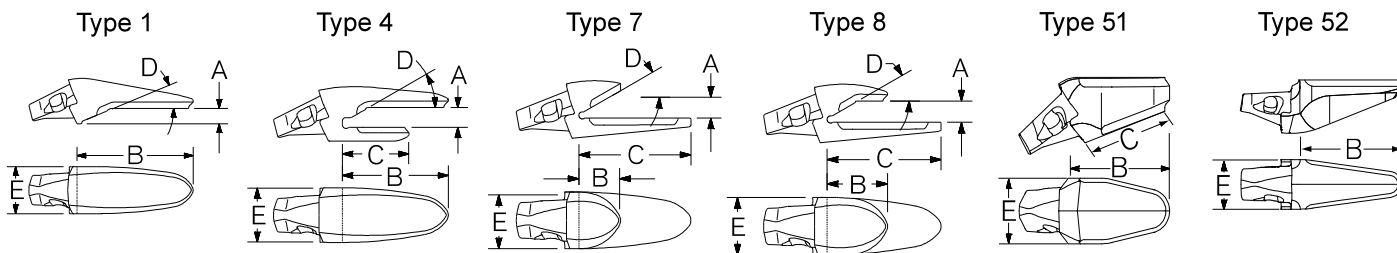
84005



Weld-on Nose

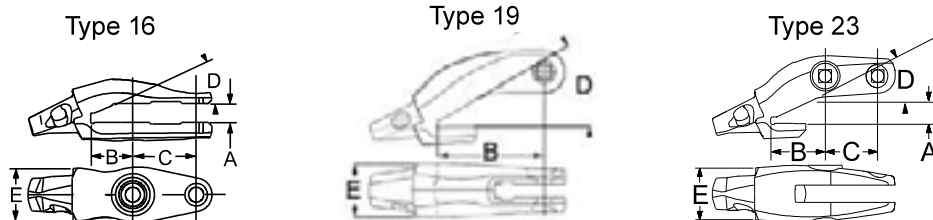
PART ID	DESCRIPTION	A WIDTH mm/in	B HEIGHT mm/in	C J-GROOVE mm/in	WEIGHT kg/lb
WN-U25	Weldon Nose	90 / 3.54	86 / 3.39	21 / .83	2.7 / 6.0





U25 Adapters

PART ID	TYPE	DESCRIPTION	A LIP THICKNESS mm / in	B TOP LEG mm / in	C BOTTOM LEG mm / in	D RAMP ANGLE deg	E ADAPTER WIDTH mm / in	NOSE ANGLE deg	WEIGHT kg / lb	MACHINE TYPE
Excavator										
5854-U25	8	1-1/2 Bottom Leg	25 / 1.00	95 / 3.74	190 / 7.48	30	90 / 3.54	10	6.3 / 13.8	EXC
5849-U25	8	1-1/2 Bottom Leg	30 / 1.25	95 / 3.74	190 / 7.48	30	90 / 3.54	10	6.1 / 13.4	EXC
3870-U25	7	Bottom Leg	30 / 1.25	53 / 2.08	113 / 4.45	30	90 / 3.54	10	4.8 / 10.6	EXC
Wheel Loader										
3808-U25	4	1-1/2 Top Leg	35 / 1.38	178 / 7.01	89 / 3.50	30	90 / 3.54	15	6.0 / 13.2	FEL
8803-U25	1	Flushmount	30-35 / 1.25-1.50	199 / 7.83	N/A	25	90 / 3.54	15	7.6 / 16.8	FEL
Miscellaneous										
3895-U25	51	Flushmount	N/A	136 / 5.37	144 / 5.65	0	90 / 3.54	30 or 10	7.2 / 15.8	Clamshell or Auger
3898-U25	52	Flushmount	N/A	187 / 7.35	N/A	0	90 / 3.54	9	6.6 / 14.6	Clamshell



U25 Bolt-on Adapters

PART ID	TYPE	DESCRIPTION	A LIP THICKNESS mm/in	B 1st BOLT HOLE mm/in	C 2nd BOLT HOLE mm/in	D RAMP ANGLE deg	E ADAPTER WIDTH mm/in	NOSE ANGLE deg	WEIGHT kg/lb	BOLTS (qty) SIZE (in)	MACHINE MODEL
5740-U25	16	2 Leg 2 Bolt	25 / 1.00	72 / 2.84	125 / 4.92	25	90 / 3.54	15	7.4 / 16.3	(2) 7/8 X 2-3/4 PB *	KAW 70BC, 70DC, 70Z II, III, IV, , 80Z II
5788-U25	23	2 Leg Corner 2 Bolt	25 / 1.00	105 / 4.13	100 / 3.94	25	98 / 3.86	15	9.4 / 20.7	(2) 7/8 X 3-3/4 PB *	KAW 70BC, 70DC, 70Z II, III, IV, , 80Z II
8705-U25	16	2 Leg 2 Bolt	32 / 1.25	78 / 3.08	114 / 4.50	22.5	90 / 3.54	15	9.3 / 20.5	(2) 1 X 4 PB **	CASE 721D/E/F, 821B/C
8704-U25	23	2 Leg Corner 2 Bolt	32 / 1.25	80 / 3.14	114 / 4.50	22.5	98 / 3.86	15	9.5 / 20.8	(2) 1 X 4 PB **	CASE 821B/C
8720-U25	23	2 Leg Corner 2 Bolt	32 / 1.25	115 / 4.51	114 / 4.50	22.5	98 / 3.86	15	10.9 / 24	(2) 1 X 4 PB **	CASE 721D/E/F
8781-U25	16	2 Leg 2 Bolt	25 / 1.00	63.5 / 2.50	88.9 / 3.50	30	90.1 / 3.55	15	8.5 / 18.7	(1) 3/4 X 3-1/4 PB ^ (1) 3/4 X 3-1/2 PB ^	DEERE 444, 524, 544, 624
8782-U25	19	2 Leg Corner 1 Bolt	25 / 1.00	210 / 8.25	N/A	30	90 / 3.54	15	12.6 / 27.8	(1) 1 X 3-1/4 PB ^^	DEERE 444, 524, 544, 624

^ Use with 3/4" x 45 degree tapered nut

^^ Use with 1" x 45 degree tapered nut

* Use with 7/8" standard hex nut

** Use with 1" standard hex nut